



# The Pump House, West Sussex

## Blackgate Lane, Pulborough, RH20 1DF

A fabulous 4-bedroom family home in a rural location surrounded by countryside. Set at the end of a quiet country lane with fantastic walking and riding routes right on the doorstep in all directions.

The Pump house offers the comforts of modern living with characterful features throughout. There is a lovely, spacious country kitchen with adjoining snug, a living room with log burning stove, two conservatory spaces and plenty of room for a home office. There is ample parking at the property as well as a generous front garden with patio area.

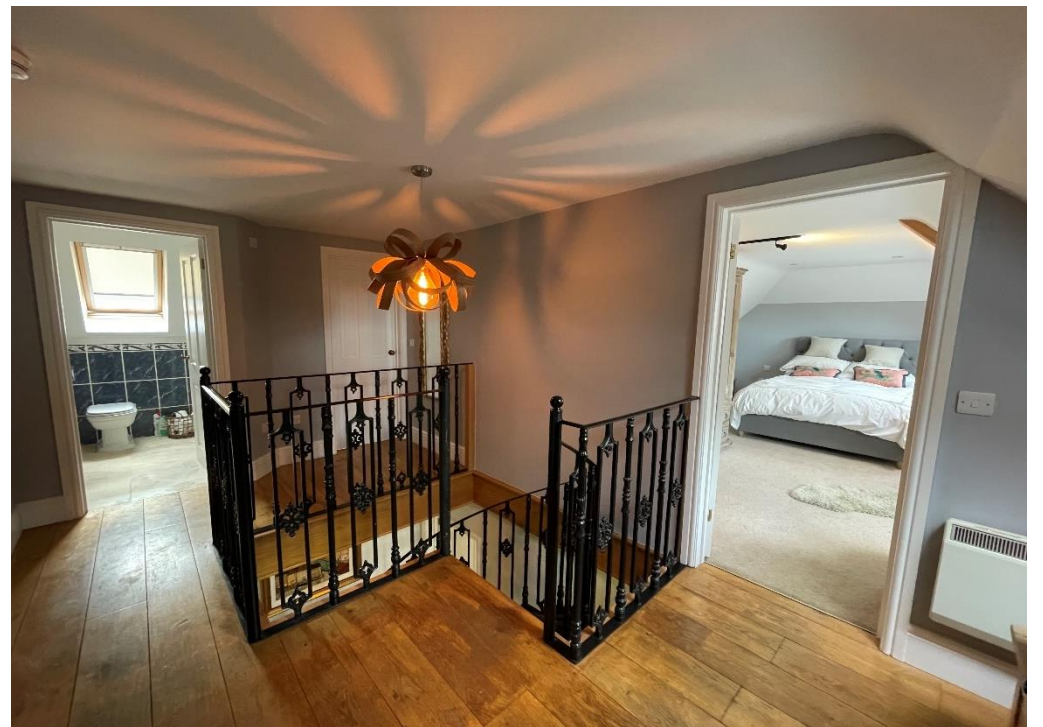
*A 15- box stable yard is also available by separate negotiation, please ask the agent for further details.*

## The property

- 4- double bedrooms including a large master bedroom with en-suite
- Spacious kitchen with Rangemaster cooker
- Underfloor heating throughout the ground floor
- Space for a home office
- Useful utility room
- Sitting room with log burning stove
- Large garden with patio area
- Plenty of parking
- Surrounded by countryside with fantastic walking routes right on the doorstep







# CHURCHILL

COUNTRY & EQUESTRIAN



UKLANDand  
FARMS.co.uk

 OnTheMarket.com

Viewing strictly by appointment through the Landlord's Sole Agents – Churchill Country & Equestrian Estate Agents – 01403 700222

MONEY LAUNDERING REGULATIONS 2003 intending purchasers will be asked to produce identification and proof of financial status when an offer is received. We would ask for your co-operation in order that there will be no delay in agreeing the sale. THE PROPERTY MISDESCRIPTIONS ACT 1991 The Agent has not tested any apparatus, equipment, fixtures and fittings or services and so cannot verify that they are in working order or fit for the purpose. A Buyer is advised to obtain verification from their Solicitor or Surveyor. References to the Tenure of a Property are based on information supplied by the Seller. The Agent has not had sight of the title documents. A Buyer is advised to obtain verification from their Solicitor. You are advised to check the availability of this property before travelling any distance to view. We have taken every precaution to ensure that these details are accurate and not misleading. If there is any point which is of particular importance to you, please contact us and we will provide any information you require. This is advisable, particularly if you intend to travel some distance to view the property. The mention of any appliances and services within these details does not imply that they are in full and efficient working order. These particulars are in draft form awaiting Vendors confirmation of their accuracy. These details must therefore be taken as a guide only and approved details should be requested from the agents